



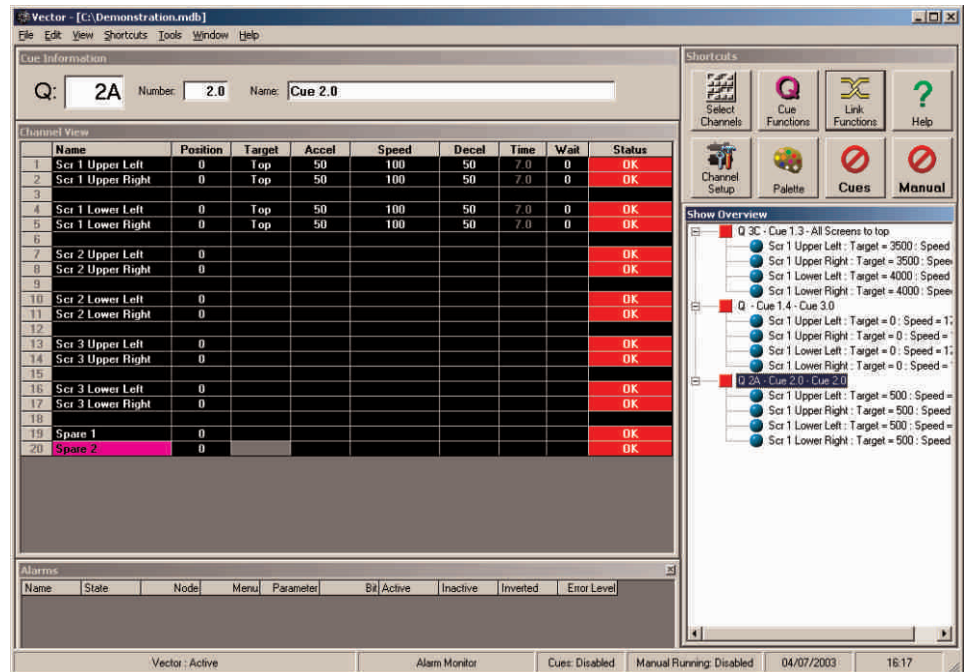
**vector** is the entry-level motion control software solution from kinesys. Its advanced features and ease of use make it the logical choice for fixed and touring installations of all sizes.

**vector** has a wealth of editing features designed to allow rapid entry of cue information and to give the operator instantaneous feedback on move times and speeds. Advanced linking features allow complex cue sequences to be easily constructed while maintaining maximum flexibility over the overall operation of the devices in motion. Comprehensive channel settings allow remote configuration of the drives and controllers in the system.

**vector's** full integration with all kinesys controllers also ensures that maximum feedback is available to the operator for ease of system monitoring.

**vector** is a PC-based control system running on Windows XP or Vista. All the editing and movement features are available with just a mouse or touch-screen and a standard PC or laptop keyboard.

A demonstration version of **vector** software is available free of charge to allow users to evaluate the software in their own time.



## features

- Flexible and configurable: can be used with a multitude of different controllers and communications networks simultaneously
- Designed with large buttons and icons for easy touch screen integration and operation
- Multiple playbacks permit simple execution and control of several simultaneous cues
- Advanced linking and timing features to allow individual cues to be assembled into complex sequences
- 'Dead Mans Handle' feature assignable on a channel by channel basis
- Multiple window interface enables the user to arrange the windows to their personal preference and to allow best use of screen space
- Three levels of user login to enable different permissions to be set and sections of the system to be locked out according to user access level
- Easily accessible manual running system allows easy movement of devices for maintenance or during installation, without the need to write specific cues
- Axis grouping, deads and profiles allow fast creation and editing of large shows
- Groups allow quick channel selections and manual running of multiple channels
- Safety of pre-defined groups of physically locked devices is ensured through the use of group halting and error windowing to prevent members of a group moving out of synchronisation with each other
- Deads and profiles allow global positions and speeds to be defined - any changes will automatically be applied to all cues using that dead or profile within the current show
- Alarms monitoring shows status of external Dead Man's Handles and Emergency Stop switches
- Full help system within program
- Operates under Windows XP or Vista for stability and ease of operation

**specifications****MINIMUM SYSTEM REQUIREMENTS:**

1GHz or faster processor  
256MB RAM  
10GB hard disk space  
XGA (1024x768) display  
CDROM drive  
Microsoft Windows XP or Vista  
Keyboard and mouse  
10- or 100-baseT Ethernet port

**RECOMMENDED SYSTEM REQUIREMENTS:**

2 GHz Pentium or equivalent processor  
512MB RAM  
40GB hard disk  
SXGA (1280x1024) display  
CDROM drive  
floppy disk drive  
Microsoft Windows XP Professional or Vista Business  
full-size 102-key keyboard and mouse  
100-baseT Ethernet port  
PCI or PC Card slot for optional communications card

**OPTIONAL SYSTEM ACCESSORIES:**

USB keypad  
touchscreen

**INTERFACES:**

Ethernet to kinesys controllers  
RS485, ARCNet, CANbus,  
PROFibus etc. to third party controllers on request

**CHANNEL CAPACITY:**

unlimited

**CUE CAPACITY:**

limited only by available system memory

**PLAYBACKS:**

four (each capable of handling multiple simultaneous cues)

**KEYBOARD FUNCTIONS:**

individual start and stop for each playback  
manual running up / down / stop  
group manual running up / down / stop  
global motion stop  
manual control on / off  
cue control on / off  
cue load

**HELP SYSTEM:**

HTML and Windows Help format